

PSOMAS

Grant Road Phases 5&6

Park Avenue to Palo Verde Road

Public Meeting

May 18, 2026



**CITY OF
TUCSON**

RTA
Regional Transportation Authority



Presentation Outline

- Grant 3&4 Status update
- Grant 5&6 Update
- Fundamentals of Noise Mitigation
- Results of Noise Study for Grant 5&6
- Next Steps



Phases 3 & 4 – Sparkman BL to Swan BL

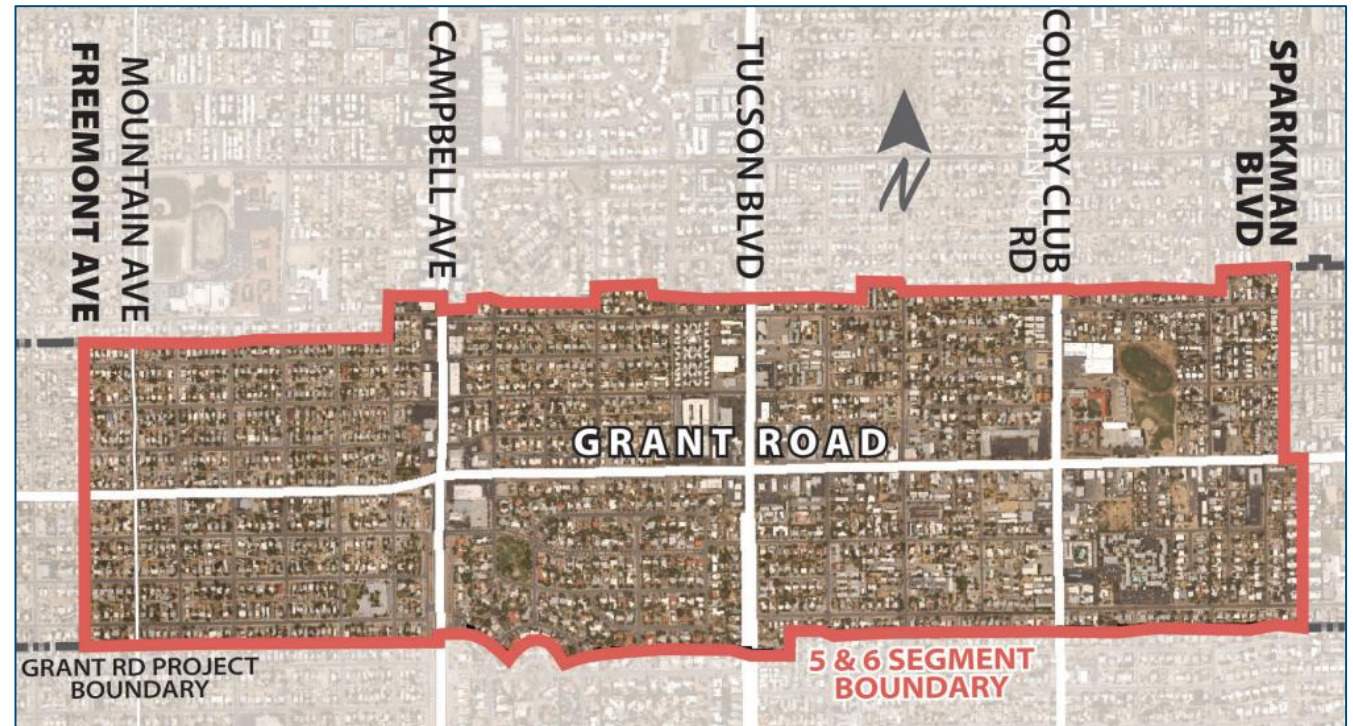
- Construction
 - Started May 2024
 - Scheduled Completion October 2026
- Multiple Phases Occurring Concurrently:
 - Demolition and Grading:
 - North side of Grant, Alvernon to Columbus
 - North side of Grant, Columbus to Venice PL
 - East side of Alvernon, north and south of Grant (August)
 - Paving preparation:
 - Alvernon to Columbus, north side of Grant (June/July)
 - West side of Alvernon, north and south of Grant (July)
 - Columbus to Venice, north side of Grant (August)
 - Underground Utility Work:
 - West side of Alvernon – mostly complete
 - Alvernon to Columbus – mostly complete
 - Columbus to Venice – storm drain
 - East side of Alvernon – mostly complete



Grant Rd 5&6 – Project Description

- Phases 5&6 (Fremont to Sparkman) will complete corridor improvements
 - 6 travel lanes
 - Indirect Left Turns (ILT) at major intersections
 - Buffered bike lanes
 - Wide sidewalks
 - Protected bike/pedestrian crossings
 - Transit pullouts, shelters
 - Landscaping and water harvesting

All work per RTA original scope and project approach approved by CTF



Grant Rd 5&6 – Project Status

- Project Status
 - 90% plans completed
 - Technical studies completed (traffic, drainage, noise)
 - On-going coordination with utilities
 - Consultants on board for property acquisition
 - Remaining project work funded by RTA Next
- Upcoming activities
 - 100% plans – including noise walls
 - Right-of-way acquisition



Grant Rd 5&6 – Project Status

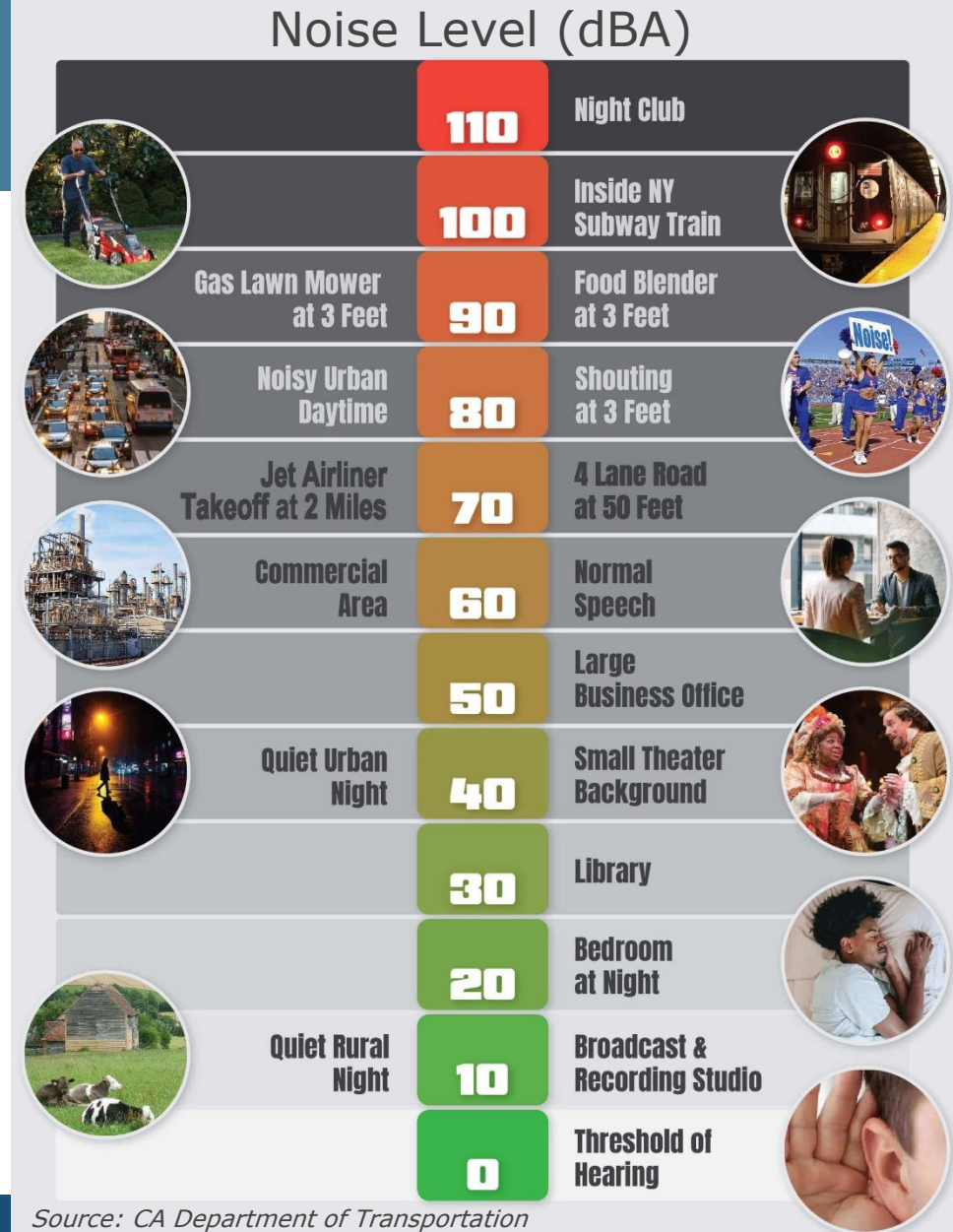
Project Schedule

- Final plans (100%) → Now through End of 2026
- Property acquisition → Now through End of 2027
- Utility relocations → Mid 2027 through Mid 2029
- Construction Start → Mid 2029



Fundamentals of Noise Mitigation

- Measured in Decibels (dB)
- dBA – A-weighted scale to match human hearing
- Logarithmic scale
 - 3 dBA just noticeable change
 - 10 dBA double the noise level
- Sources of road noise:
 - Engine
 - Tire-pavement interaction
- Noise diminishes with distance from source

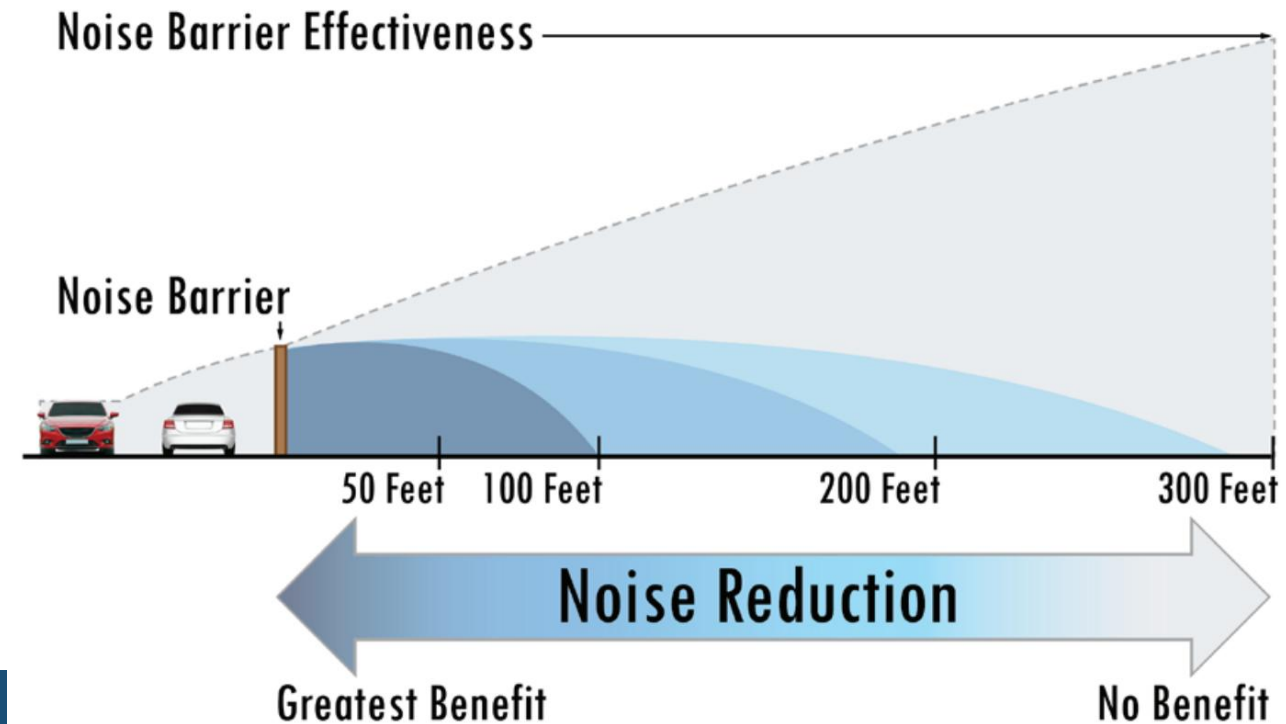


Source: CA Department of Transportation

Fundamentals of Noise Mitigation

Things to know

- Road noise levels are affected by traffic volumes, type of vehicles, speeds, road profile
- Effective barriers are continuous - driveways reduce effectiveness
- Trees are not effective at reducing noise (lack density to redirect sound waves)
- Noise walls are not traffic safety treatments
- Screen/privacy walls are different from noise walls



Source: Missouri Department of Transportation

Fundamentals of Noise Mitigation

- RTA / Pima County Noise Mitigation Policy → based on national guidelines
- Sensitive receivers (residential, parks, schools, libraries) are eligible for mitigation with a barrier (wall) if they meet all of the following criteria:

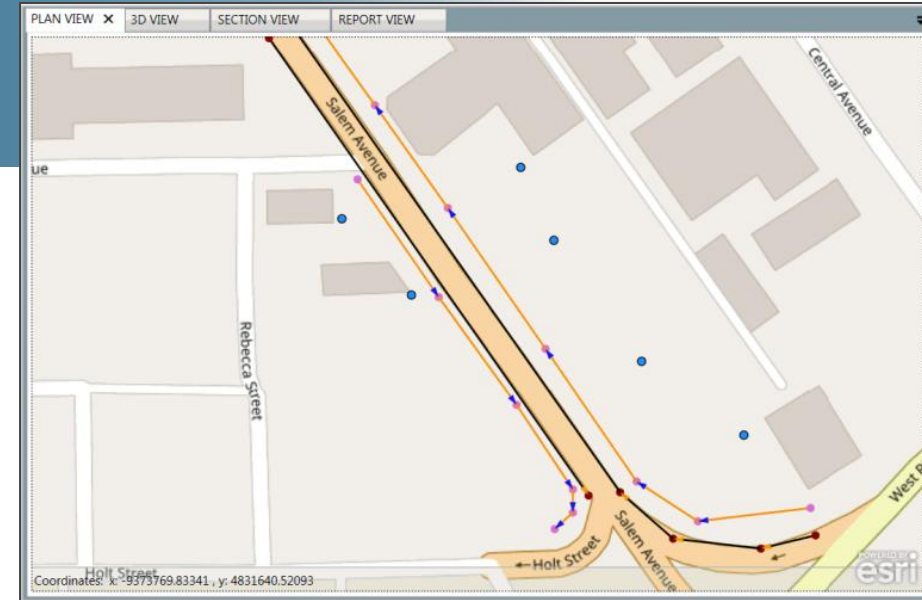
- Noise level without mitigation would be 66 dBA or higher
- Barrier achieves at least 5 dBA noise reduction
- 10' max height
- Must benefit 2 or more receivers
- Max cost is \$35k per property
- Must be approved by >50% of affected owners



Noise Study Process

Noise Study Process

- Create noise model for existing conditions - FHWA Traffic Noise Model (TNM)
- Measure Existing Noise
- Calibrate Model by comparing to sound measurements
- Use model to predict future noise levels with project (future volumes, road profile, vehicle types, etc.)
- Compare future noise with Mitigation Policy
- Use model to verify barriers would be effective



Grant Rd 5&6 – Noise Analysis Results

- Noise Study completed in December 2022
- 8 segments eligible for noise mitigation with walls (exhibit at noise mitigation table)
- Wall heights range from 6-10 ft
- Still needs approval from affected owners

Wall #	Side	From	To	Neighborhood
1	North	Santa Rita	Mountain	Mountain First Ave
2	North	Mountain	Highland	Samos
3	South	Highland	Vine	Jefferson Park
4	South	Vine	Cherry	Jefferson Park
5	South	Cherry	Warren	Jefferson Park
6	South	Warren	Martin	Jefferson Park
7	South	Norris	Wilson	Catalina Vista
8	South	Wilson E		Catalina Vista



Grant Rd 5&6 – Next Steps

- Reach out to individual property owners
 - Noise walls
 - Property acquisitions
- Design noise walls and include in 100% plans



Grant Rd 5&6 – Next Steps

Additional Information

- Visit - www.grantroad.info
- Email – Rob.Lane@tucsonaz.gov
- Call – (520) 400-3496
- RTA Mainstreet Business Assistance:
staylor@pagregion.com, (520)-900-3310

- Feedback/questions:

